

QS Bioneta1.2 Personal

Manual

2006-10

Index

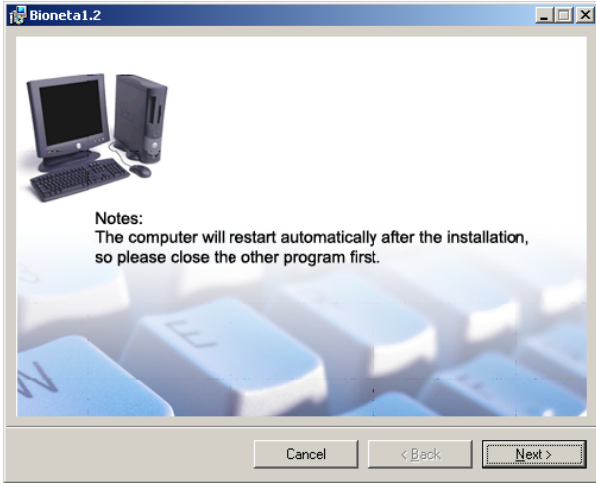
I	INSTALLATION & FIRST RUNNING	1
1	INSTALLATION.....	1
2	FIRST RUNNING	2
3	MAIN INTERFACE.....	5
II	FILE ENCRYPT / DECRYPT	5
1	FILE ENCRYPT.....	5
2	FILE DECRYPT.....	7
3	ENCRYPTOR MANAGEMENT	9
III	LOGON WEBSITE OR APPLICATION WITH FINGERPRINT	10
1	BASIC LOGON	10
2	AUTO LOGON WEBSITE	11
3	LOGON ITEM DATA MANAGEMENT.....	12
IV	LOGON WINDOWS	13
1	BY INITIAL SETTING WIZARD FOR A NEW USER.....	13
2	BY SYSTEM SETTING.....	14
3	LOGON INTERFACE	14
V	DATA SAFE	15
VI	REGISTER NEW USER	16
VII	USER DATA MANAGEMENT	16
1	BACKUP USER DATA	16

2 IMPORT USER DATA.....	16
3 MODIFY FINGERPRINT	17
4 VIEW LOGON LOG.....	18
VIII ATTACHMENTS	18
1 FAILURE DIAGNOSIS	18
2 NOTICE FOR OPERATION OF FINGERPRINT DEVICE	19

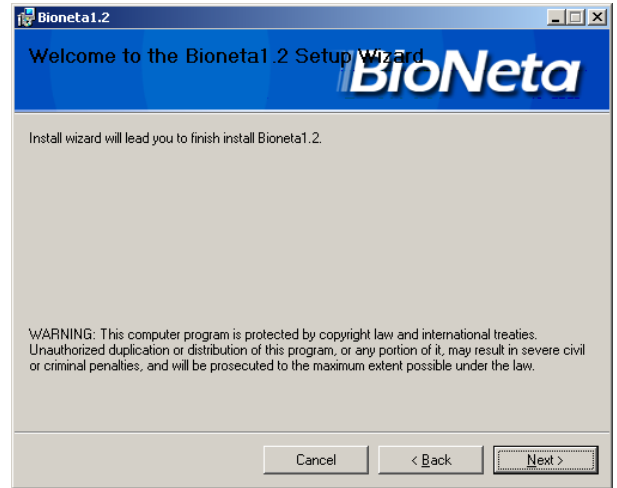
I Installation & First Running

1 Installation

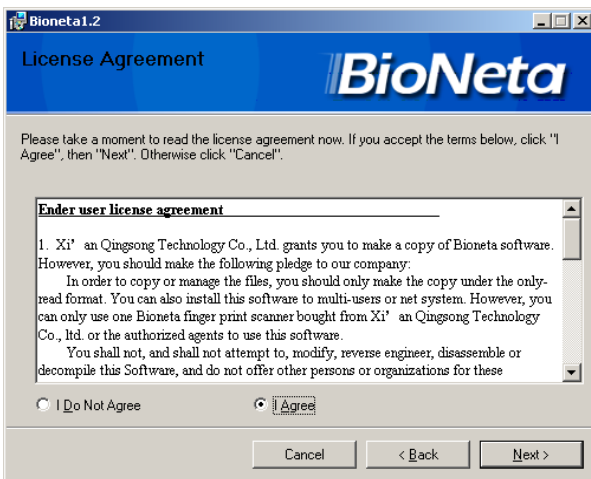
Start installation program (**Install.exe in CD**) to enter installation wizard



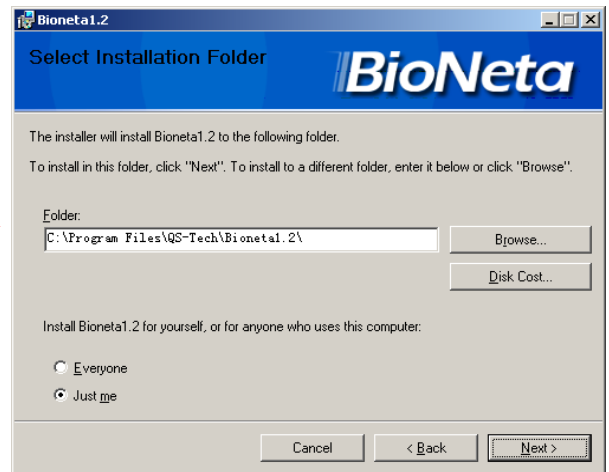
Start



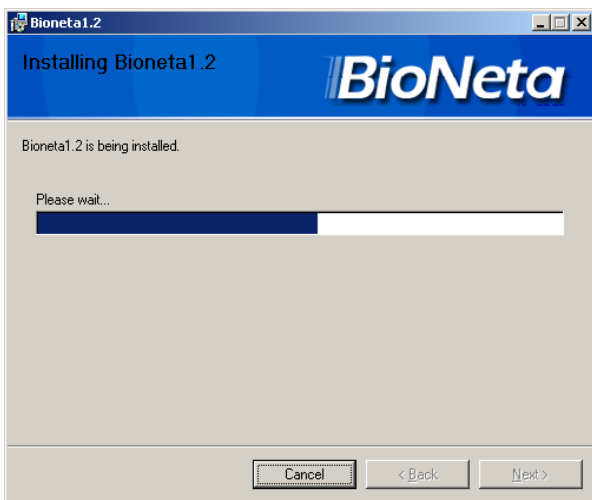
Welcome



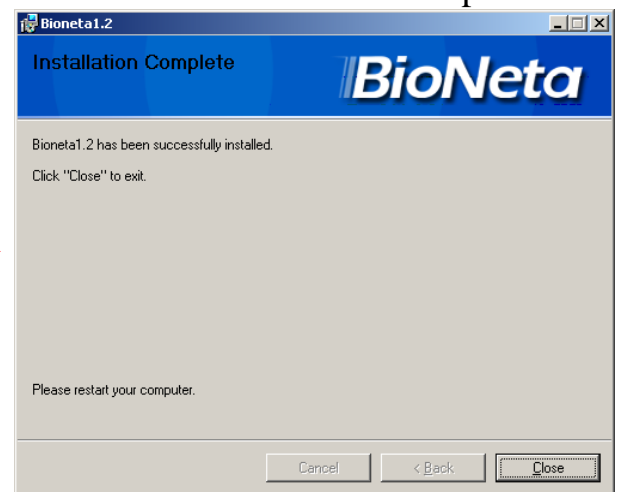
Agreement



Select installation path



Installing

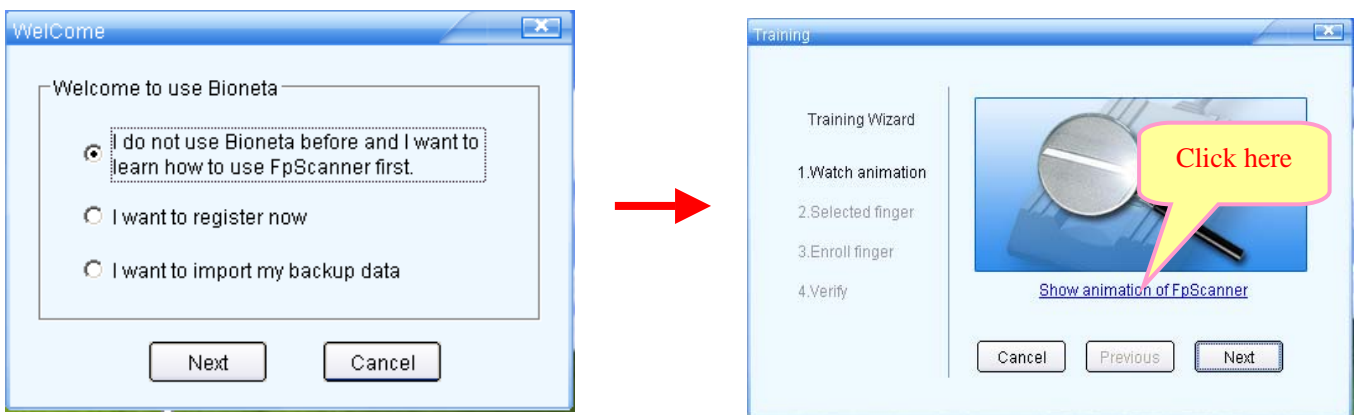


Finish

2 First running

Bioneta will run automatically after the installation. Firstly, it enter “Welcome” window, and show you three choice: “Learn how to use”, “ register” and “import backup data”.

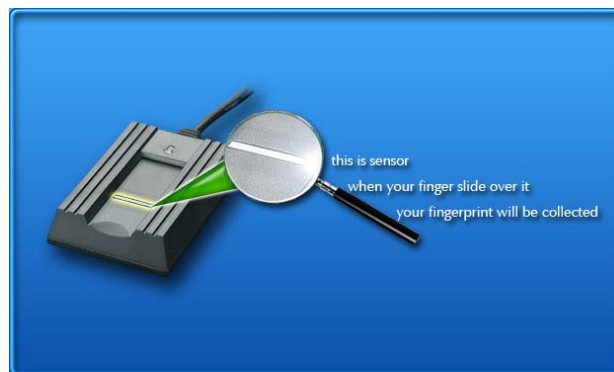
(1) Practice



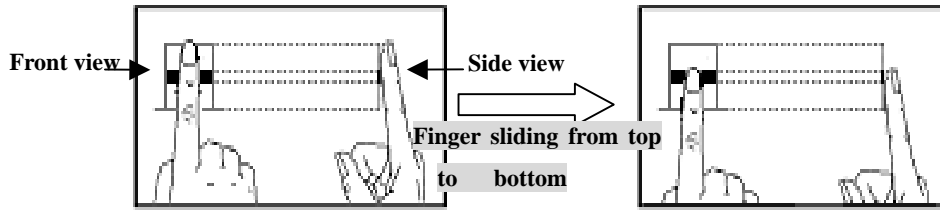
Click the marked place on the figure in the top right and observe the operational demonstration for fingerprint (mainly describe the operational method), follow the wizard to practice.

(2) Fingerprint Sensor Operation

✧ Fingerprint cannot be read until the finger slides across sensor;



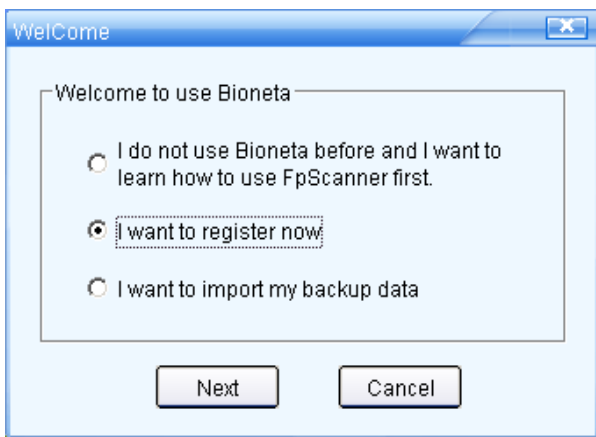
- ✧ Select clear and easily-controlled fingerprint: usually thumb or index finger;
- ✧ The finger shall press flatly on sensor as much as possible to enable the full contact but not press tightly;
- ✧ The finger shall be sliding from top to bottom in order that the main lines of finger can pass across sensor from top to bottom. At the same time, press the finger without shaking backwards and forwards; please refer to the following figures:



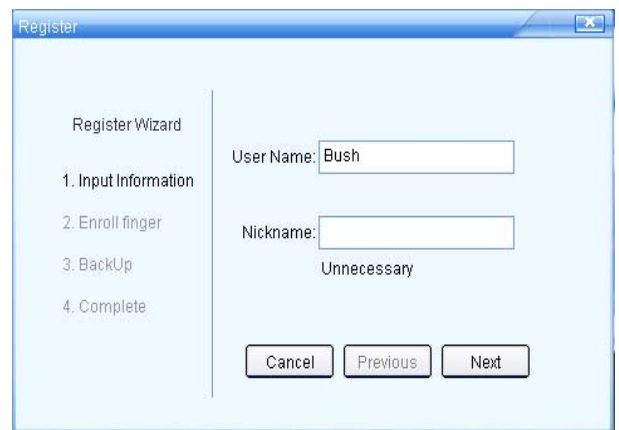
- ✧ The finger shall be sliding at a consistent speed with proper force;
- ✧ The finger shall not be too wet or too dry: the humidity of finger will have a little effect on the fingerprint recognition.

(3) User register

Bioneta will run automatically after the installation. Firstly, it enter “Welcome” window , Select “I want to register now” enter register wizard.



Select “I want to register now”



Input user name and nicknanme



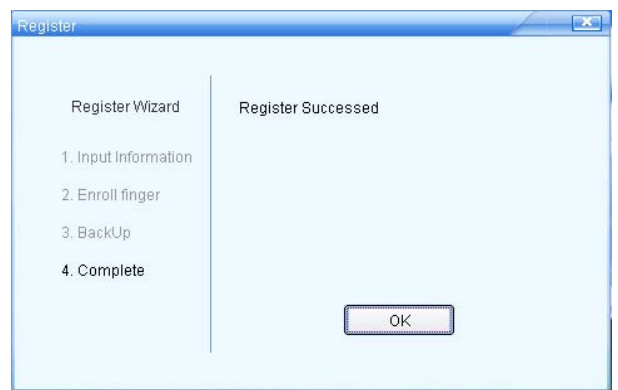
Select finger



Slide finger



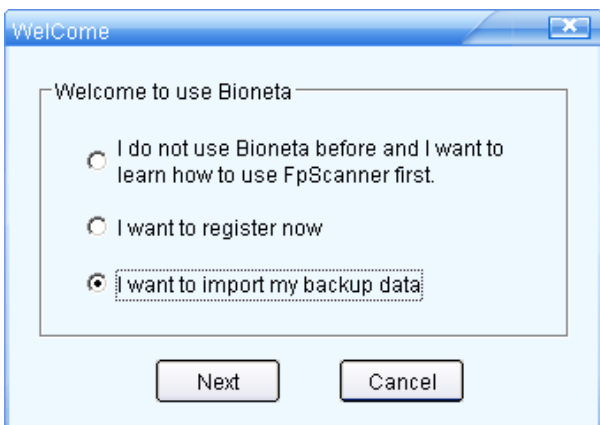
Backup user data



Finish

(4) Import backup user data

Bioneta will run automatically after the installation. Firstly, it enter “Welcome” window.

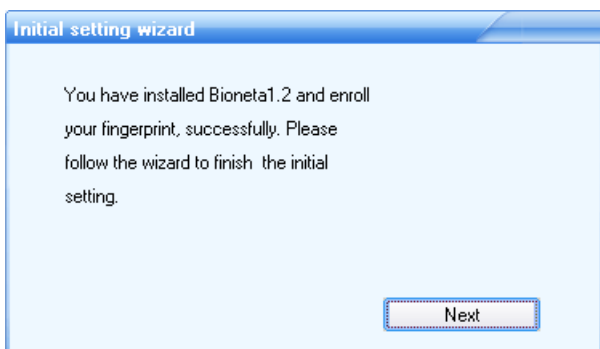


Select “I want import to my backup data”. Click “Next” and enter wizard, see also

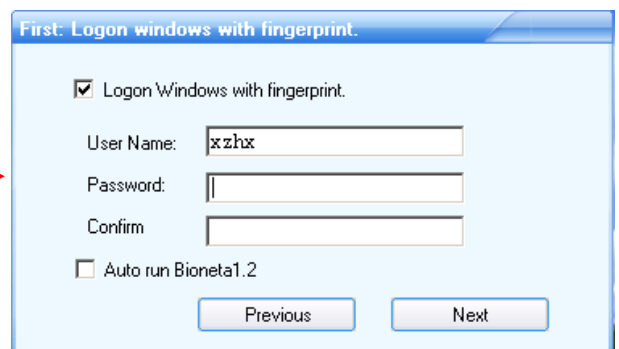
Import user data

(5) Initial setting for new user

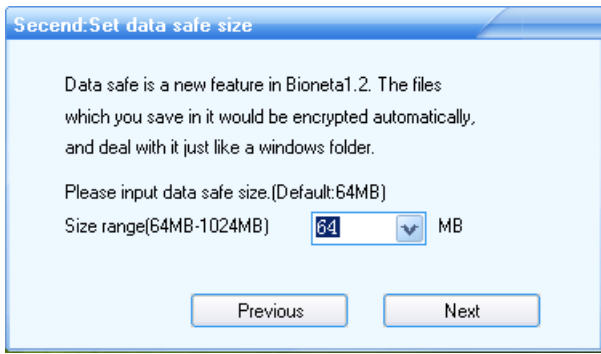
A new user login Bioneta for first time, it will enter initial setting wizard.



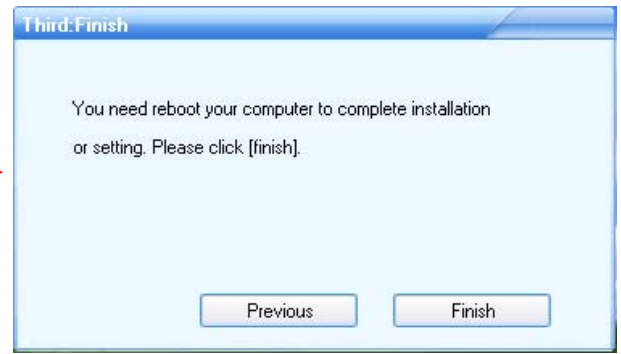
Simple instruction



Set logon Windows with fingerprint

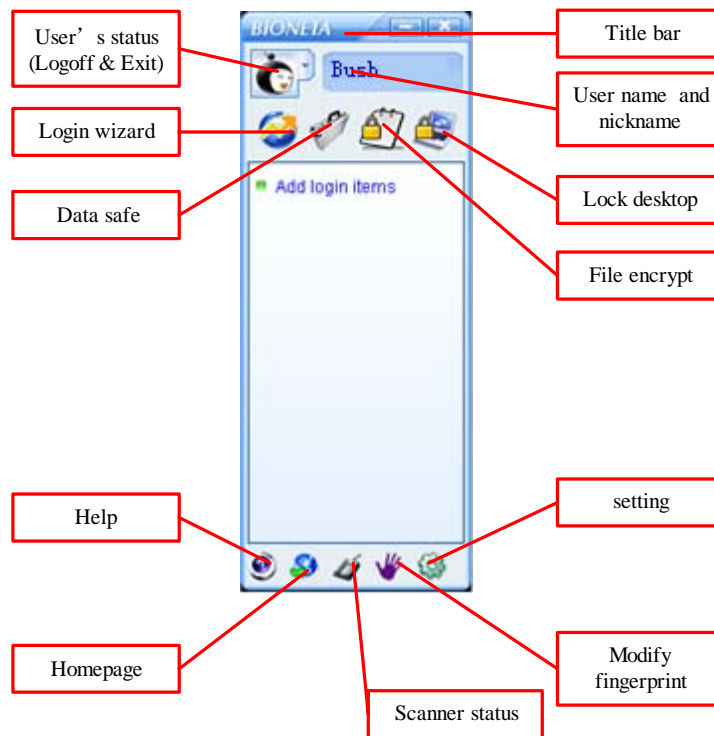


Set data safe size



Finish

3 Main interface



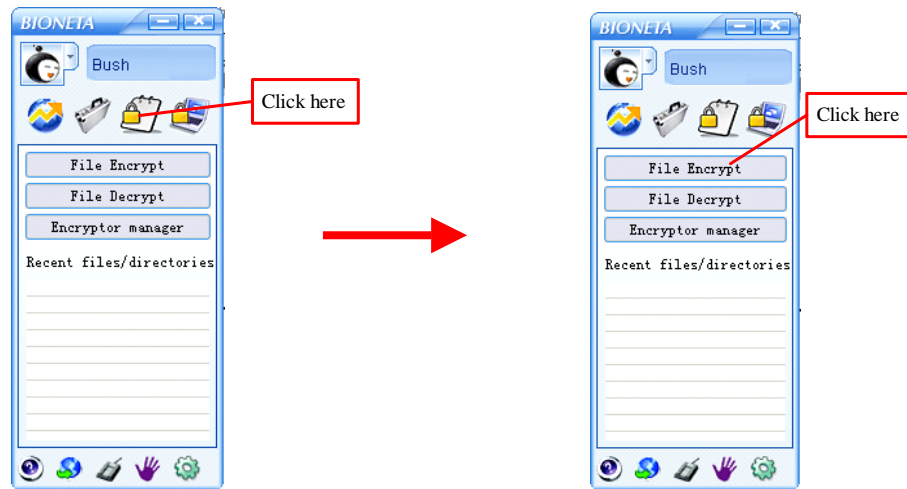
II File Encrypt / Decrypt

1 File Encrypt

There are three ways to enter “File Encrypt” wizard.

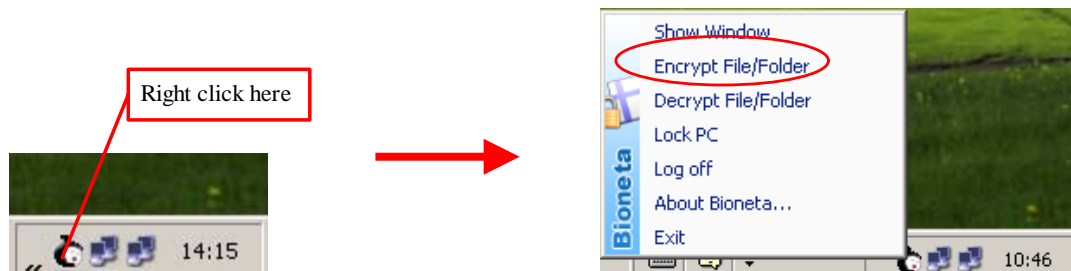
First:

- (1) Click “File Encrypt” in toolbar and enter “File Encrypt” panel.
- (2) Click “File Encrypt” button in the panel.



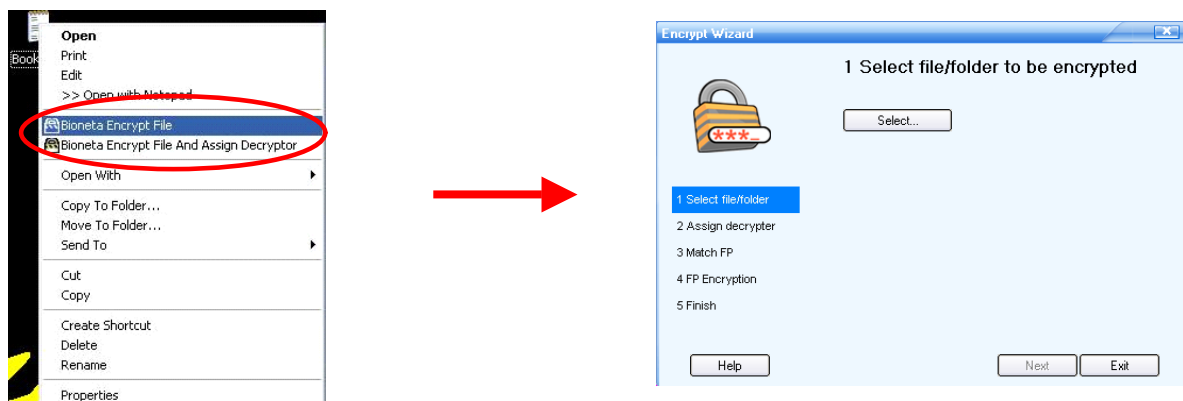
Second:

- (1) Right click Bioneta icon in Windows task bar.
- (2) Select “Encrypt File/Folder” item in the menu.



Third:

- (1) Right click icon of file or folder which will be encrypted.
- (2) Select “Bioneta Encrypt File” or “Bioneta Encrypt File And Assign Decryptor” item in the menu.



After entered “File Encrypt” wizard, please follow the wizard to finish the encryption process.

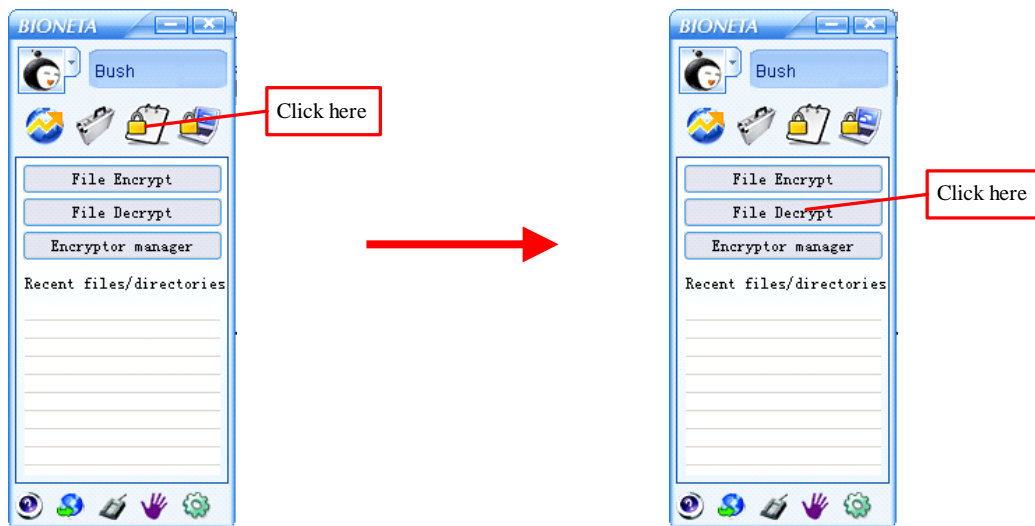
File encrypt wizard

2 File Decrypt

There are four ways to enter “File Decrypt” wizard.

First:

- (1) Click “File Encrypt” in toolbar and enter “File Encrypt” panel.
- (2) Click “File Decrypt” button in the panel.



Second:

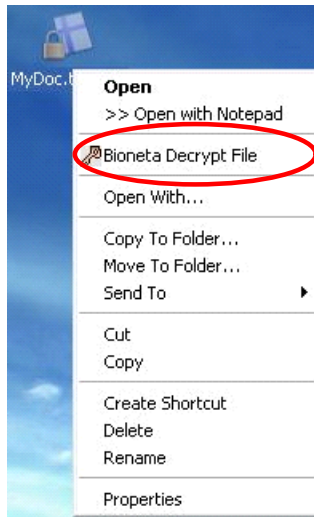
- (1) Right click Bioneta icon in Windows task bar.
- (2) Select “Decrypt File/Folder” item in the menu.



Third:

- (1) Right click icon of file or folder will be decrypted.
- (2) Select “Bioneta File Decrypt” item in the menu.

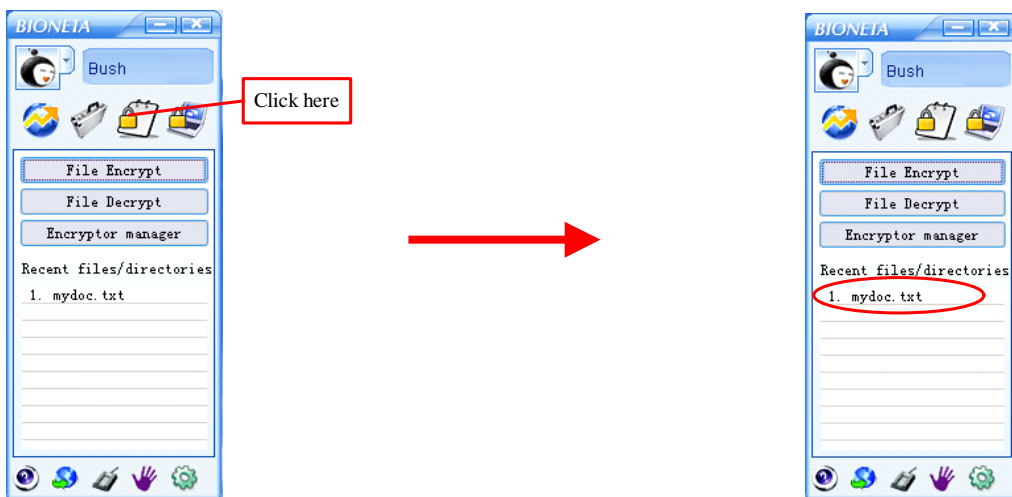




Fourth:

(1) Click “File Encrypt” in toolbar and enter “File Encrypt” panel.

(2) Double click the item in the “Recent files/directories” list.



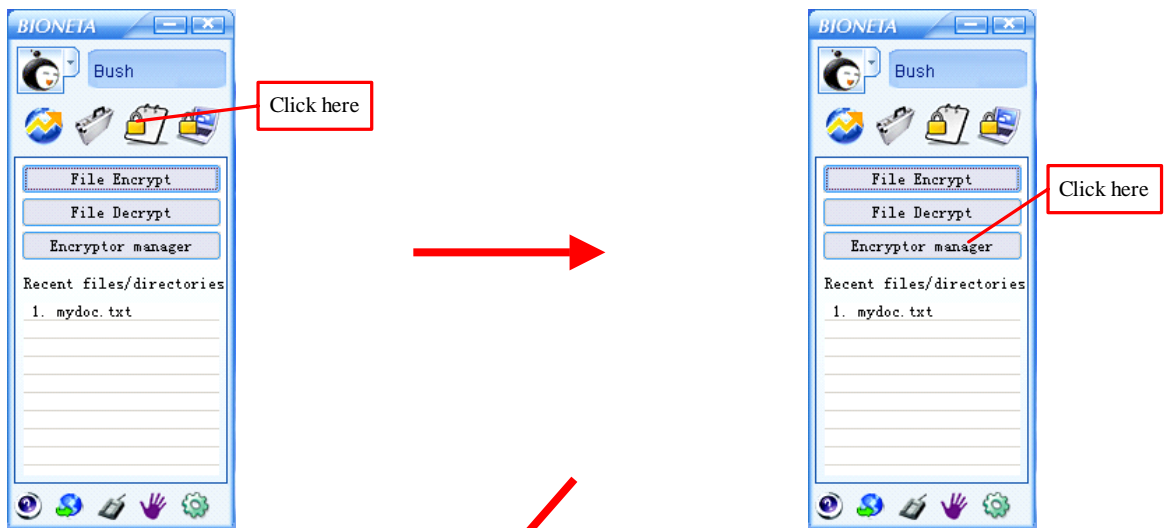
After entered “File Decrypt” wizard ,please follow the wizard to finish the decryption process.



“File Decrypt” wizard

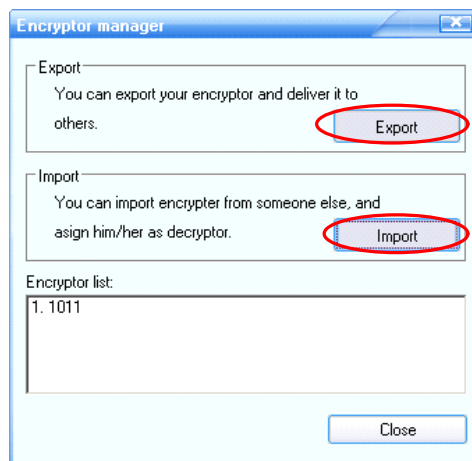
3 Encryptor management

Bioneta 1.2 provide a new function. You can encrypt a file and assign some people to decrypt it. Those people called “decrypters”. If you want to do so your need a data file ,called Encryptor, which provide by decrypters.



Enter “File Encrypt” panel

Click “Encryptor manager”

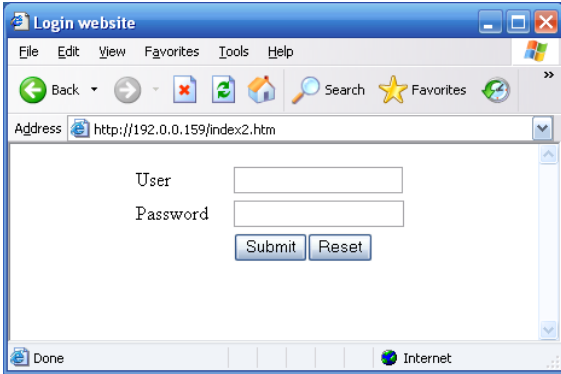


Import or export encryptor

III Logon website or application with fingerprint

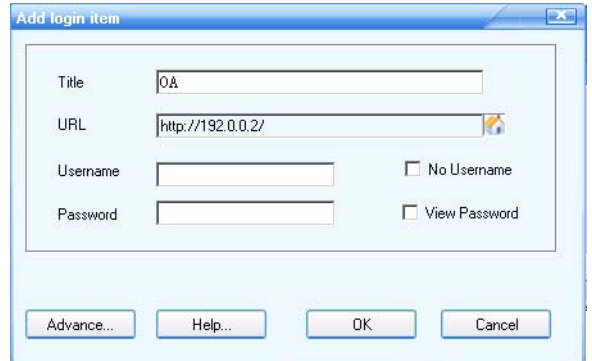
1 Basic logon

(1) Set website or application logon

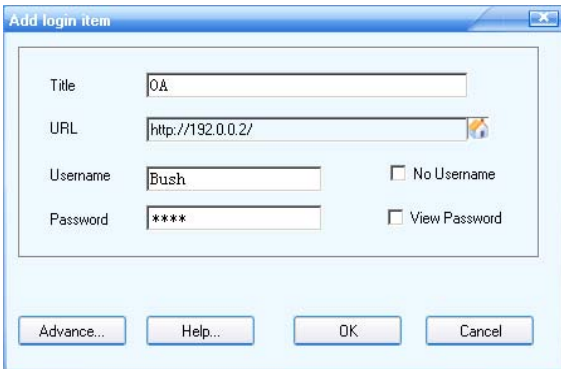


Open the website/application

Slide finger,
and pass

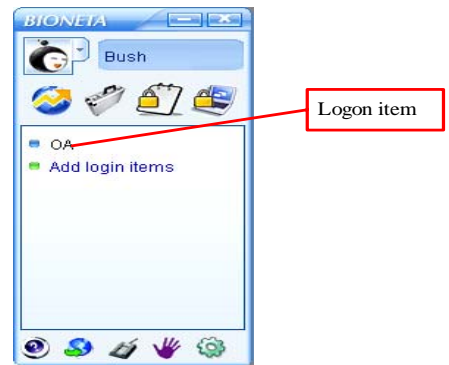


Catch URL and title automatically



Input user name, password

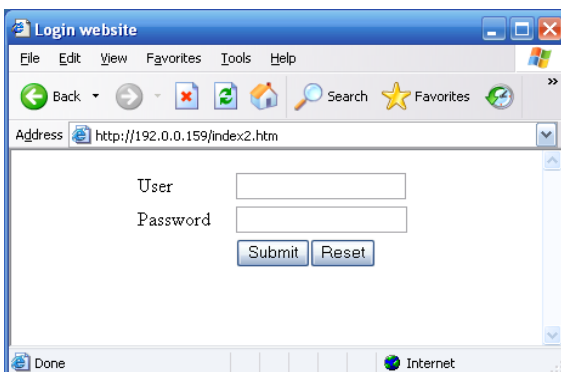
Click[OK]



Finish

(2) Logon website and application

After setting a website/application for logon, you can use fingerprint to logon it.

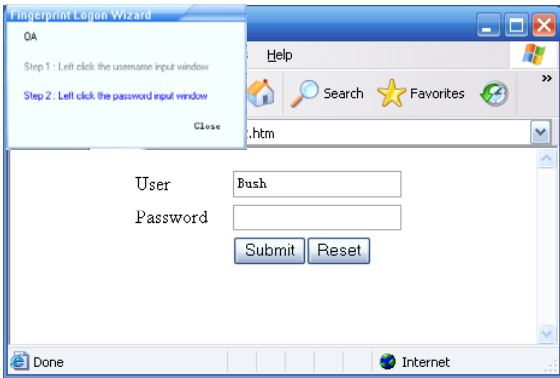


Open website of application

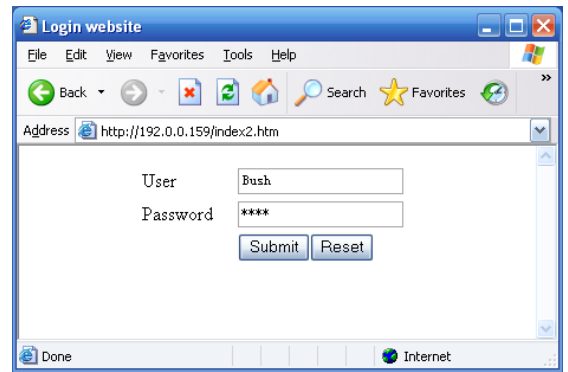
Slide finger,
and pass



Logon wizard



Click user name box.; user name will be input automatically.

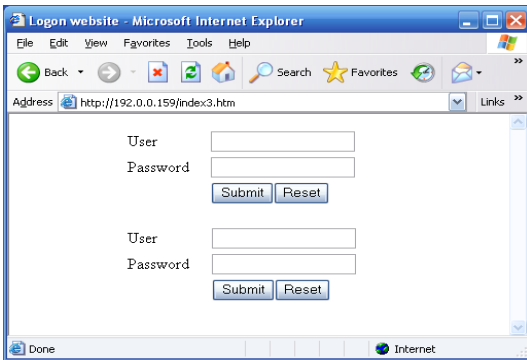


Click password box. PW will be input automatically

Click submit button to logon website or application.

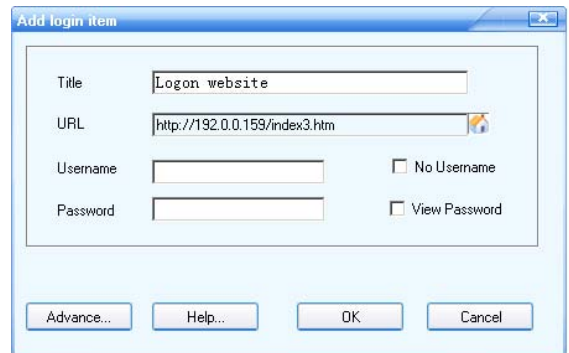
2 Auto logon website

(1) Set auto logon website



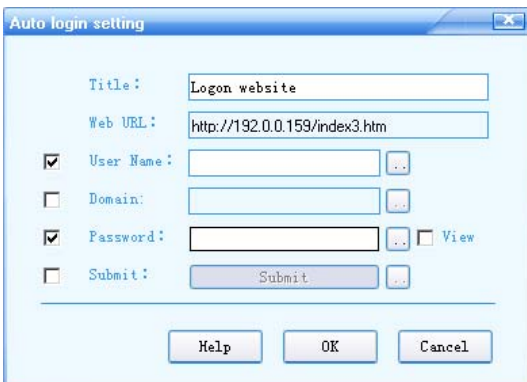
Open website

Slide finger,
And pass

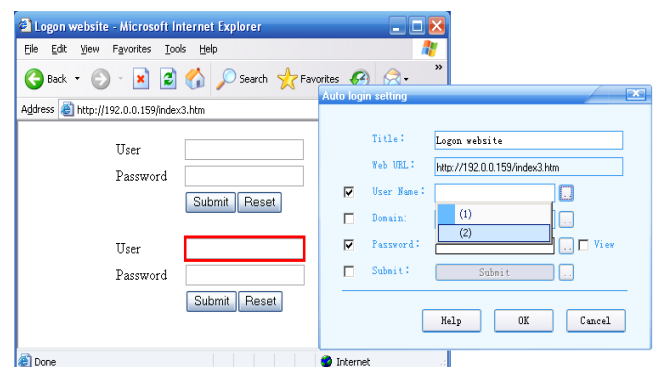


Catch URL and title automatically

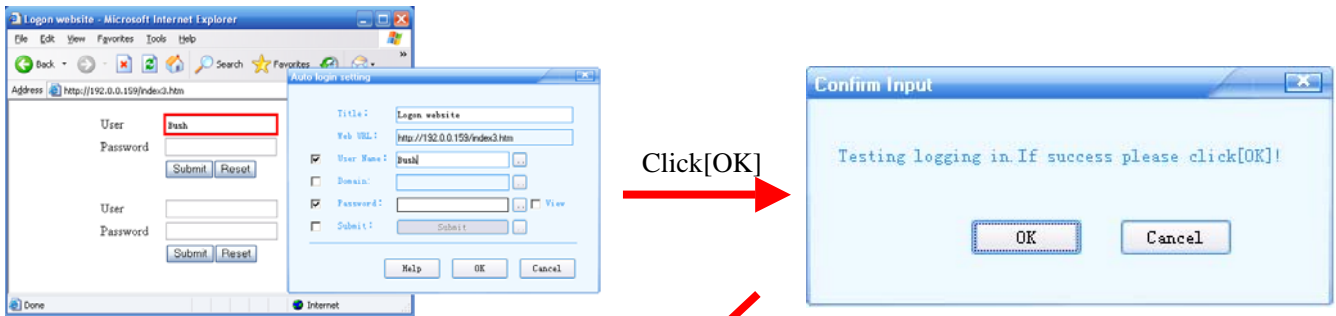
Click
[Advance]



Auto logon setting dialog box

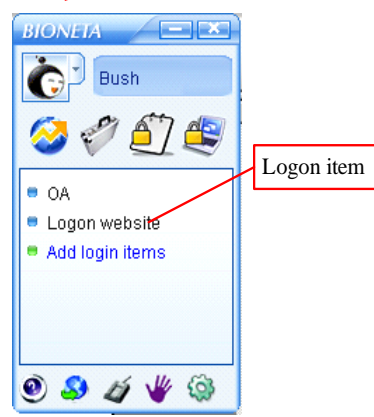


Click the small button on the right of any item to popup a menu. The menu list all elements of the same kind. Select a item you need in the menu. The selected element will be marked by a red rectangle.



Input information for logon

Test logon automatically



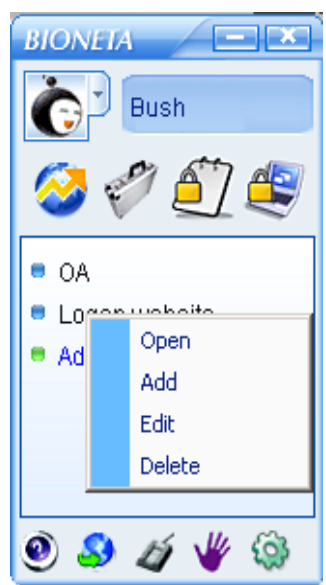
Finish

(2) Auto long website

Open the website , slide finger and pass, then it will logon automatically.

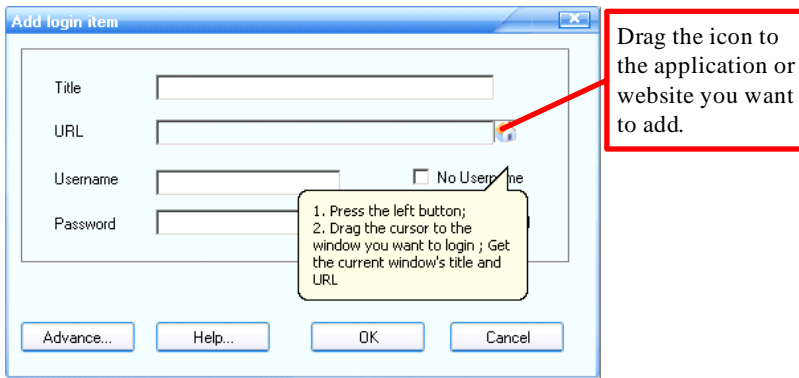
3 Logon item data management

Right click logon item to popup a menu.



Open: Open the website/application according to the logon item.

Add: Add a new logon item.



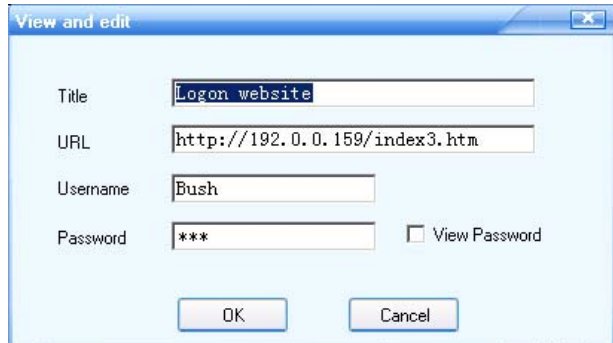
Add logon item wizard.

Drag the icon to the application or website you want to add, Bioneta will catch the information about the website/application automatically. See also: *Set website or application logon, Set auto logon website*

Edit: Modify logon item data.



Verify fingerprint



Modify dialog box

Delete: Delete a logon item.

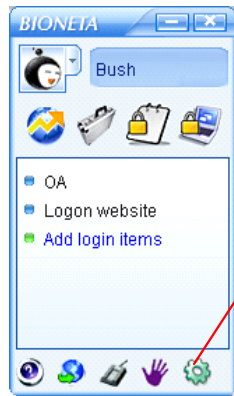
IV Logon Windows

There two ways to set logon windows with fingerprint.

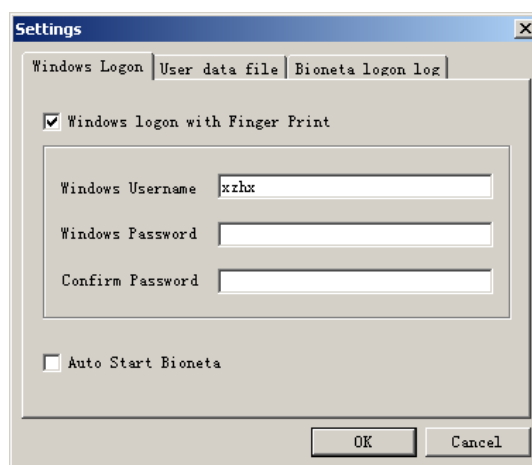
1 By initial setting wizard for a new user.

See also: *Initial setting for new user*

2 By system setting



Verify fingerprint



Input user name and password

3 Logon interface

(1) Start computer:



Starting up information

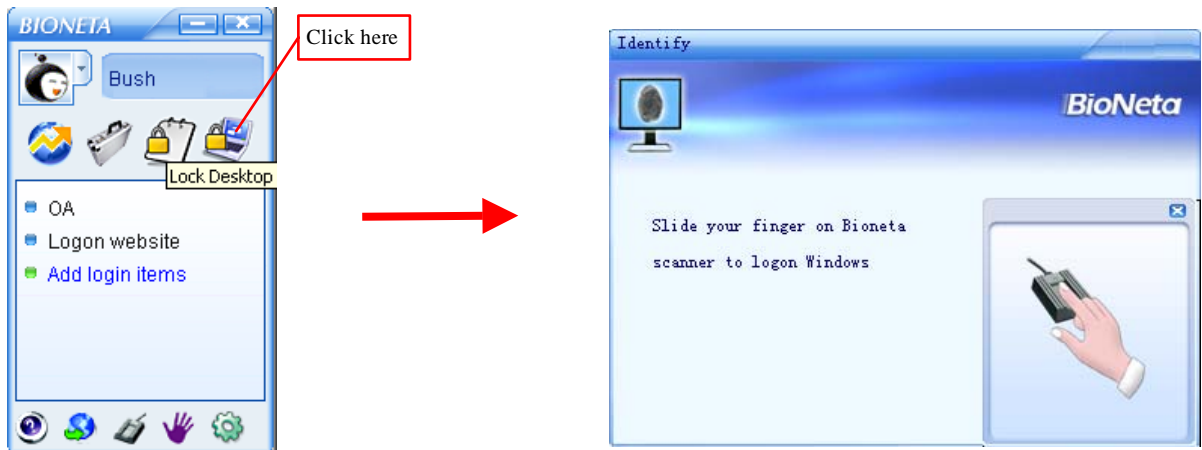


Verify fingerprint

(2) Shut down:

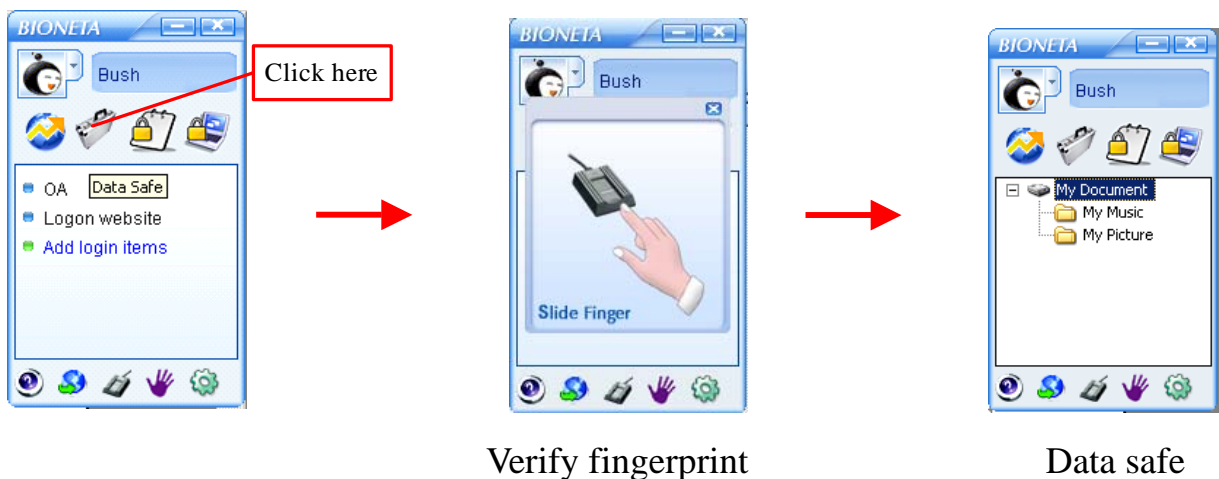


(3) Lock computer



V Data safe

Click the “Data safe” button in toolbar to enter data safe panel.



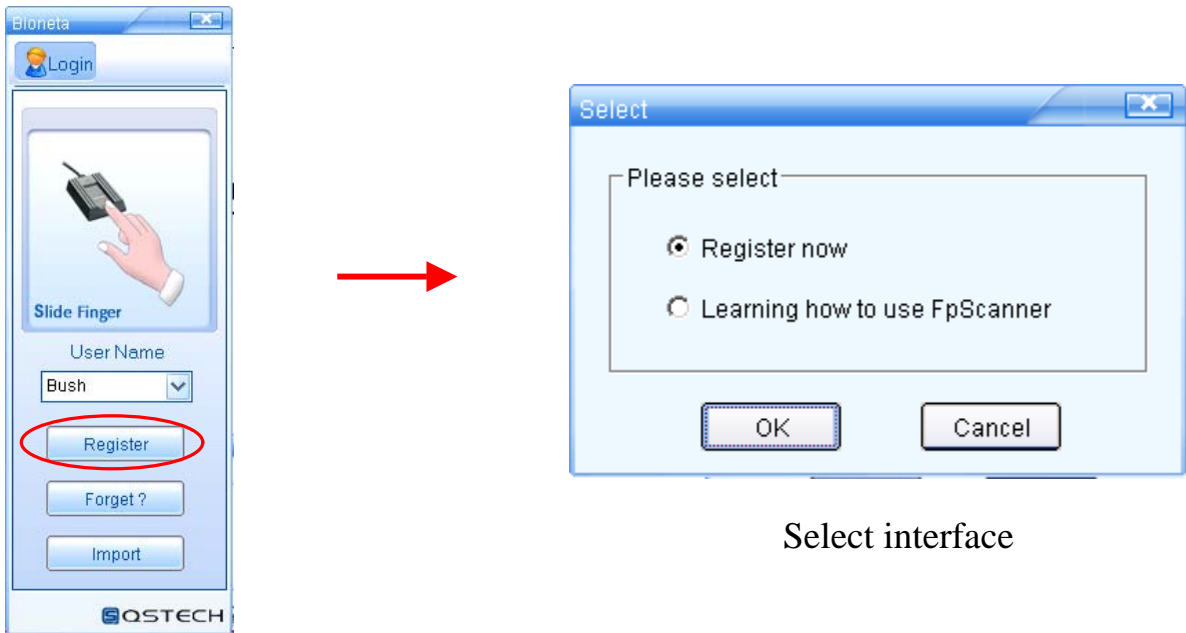
You can drag files(or copy/cut) to data safe and the files will encrypt automatically.

You can also drag out files from data safe and the files will decrypt automatically.

Totally, you can do with the data safe just like with Windows folder.

VI Register new user

Click in the Bioneta logon interface to logon register wizard.



Select interface

See also: *User register*

VII User data management

1 Backup user data

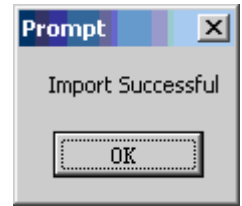
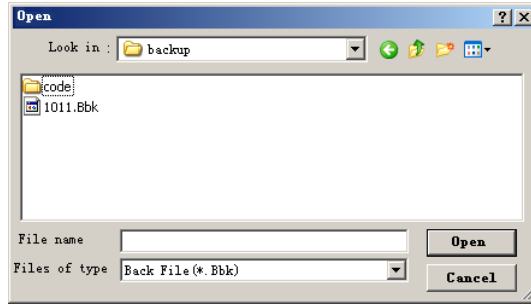


Verify fingerprint

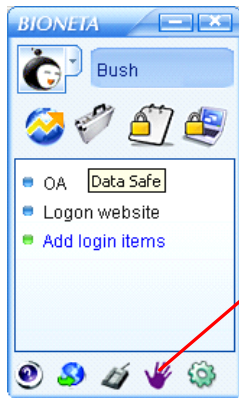
setting dialog box

2 Import user data

If you had used Bioneta before and back upped user data, you can import the user data.



3 Modify fingerprint



Verify fingerprint

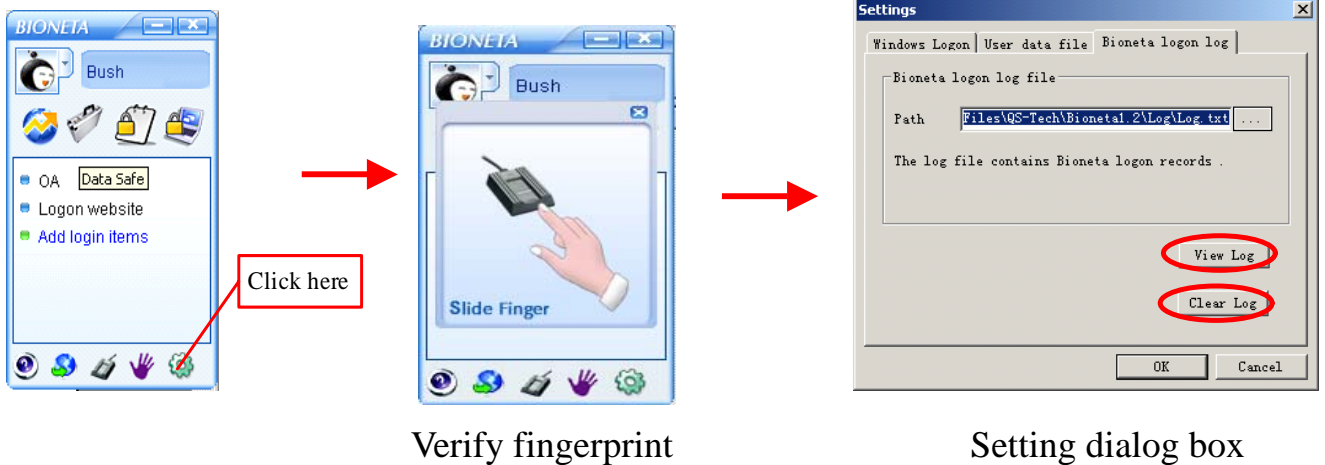


Select finger



Enroll

4 View logon log



VIII Attachments

1 Failure Diagnosis

Phenomena	Failure analysis
Fingerprint sensor cannot be found	<ul style="list-style-type: none"> ✧ Check if fingerprint sensor is connected to the port of USB. ✧ Check if connection of fingerprint sensor is in good condition and well-connected. ✧ Check if drive procedure for fingerprint sensor is installed
Fail to establish files	<ul style="list-style-type: none"> ✧ If it's the same finger to establish files ✧ Are files established according to "Requirements for fingerprint placing and pressing"(refer to pages 2, 3) ✧ Is the sliding speed too fast or too slow ✧ Is there anything on the finger ✧ Observe fingerprint image to see if the lines are clear and complete
Fail to recognize	<ul style="list-style-type: none"> ✧ Is the sliding finger the one used when establishing files ✧ Are files established according to "requirements for fingerprint placing and pressing"(refer to pages 2, 3) ✧ Is the sliding speed too fast or too slow ✧ Is there anything on the finger ✧ Observe fingerprint image to see if the lines are clear and Complete

2 Notice for operation of fingerprint device

- Do not use it in liquid or wash it with water;
- Keep away from magnetic substances;
- Avoid using it under direct sunlight or high temperature;
- Avoid scratching it with hard object;
- Do not contact it with chemical corrosive solution;
- Exert a proper force when pressing the finger